


 LAND AREA  
27845 m<sup>2</sup>

 3.619.850 €

## Features

- Auto access
- On the road
- Investment opportunity
- Enclosed land
- Street lighting
- Public transport
- Land amenities - Water
- Land amenities - Sewage
- Land amenities - Electricity
- Land amenities - Gas
- Utilities in the area



FOLLOW US ON SOCIAL MEDIA:

 facebook

CONTACT DETAILS:

Agency +40 726 11 99  
88 / Valuation +40 733  
33 09 87  
[office@espaco.ro](mailto:office@espaco.ro)

HEADQUARTERS ADDRESS:

2nd Anton Pavlovici Cehov Str., 5th Floor,  
Tanora Building, District 1, 014192,  
Bucharest, Romania, EU

## Description

The land located at the entrance to Poiana Brasov is Ideal for the development of a residential complex, shopping center, hotel, etc.

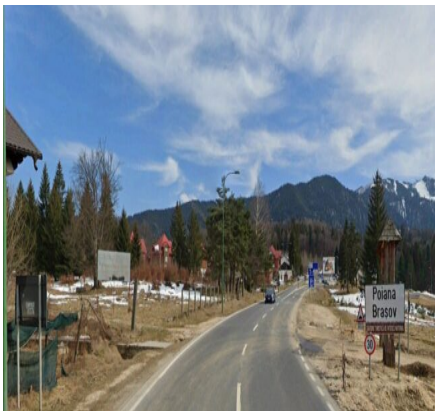
The urbanistic indicators are POT 25%, CUT 1, the height regime GF+2+M and the utilities are at the end of the lot.

The seller is a legal person and the negotiable price is 150 eur/sqm + VAT

For more details, do not hesitate to contact us!

This offer belongs to ESPACO Real Estate, tel: 0752.289. 034

## Galerie



FOLLOW US ON SOCIAL MEDIA:

 facebook

CONTACT DETAILS:

Agency +40 726 11 99  
88 / Valuation +40 733  
33 09 87  
[office@espaco.ro](mailto:office@espaco.ro)

HEADQUARTERS ADDRESS:

2nd Anton Pavlovici Cehov Str., 5th Floor,  
Tanora Building, District 1, 014192,  
Bucharest, Romania, EU



FOLLOW US ON SOCIAL MEDIA:

 facebook

CONTACT DETAILS:

Agency +40 726 11 99  
88 / Valuation +40 733  
33 09 87  
[office@espaco.ro](mailto:office@espaco.ro)

HEADQUARTERS ADDRESS:

2nd Anton Pavlovici Cehov Str., 5th Floor,  
Tanora Building, District 1, 014192,  
Bucharest, Romania, EU