

Exclusiv Villa, Carrefour Colentina area - ESP05895RB



CONSTRUCTION OF
2018



ROOMS NUMBER
6



BUILD SURFACE
750 m²



LAND AREA
355 m²



697.500 €

Features

- Air conditioning
- Stove
- Fridge
- Dishwasher
- Staircase
- Fireplace
- Alarm system
- General utilities - Water
- General utilities - Sewage



FOLLOW US ON SOCIAL MEDIA:

facebook

CONTACT DETAILS:

Agency +40 726 11 99
88 / Valuation +40 733
33 09 87
office@espaco.ro

HEADQUARTERS ADDRESS:

2nd Anton Pavlovici Cehov Str., 5th Floor,
Tanora Building, District 1, 014192,
Bucharest, Romania, EU

- General utilities - Electricity
- General utilities - Three-phase electric power
- General utilities - Gas
- General utilities - Internet
- Meters - Water meters
- Meters - Heating meter
- Meters - Electricity meter
- Meters - Gas meter
- Radiators
- Central heating
- Underfloor heating
- Heating
- Walls - Washable paint
- Yard
- Limber box
- Service closet

Description

The luxurious GF + 2 villa is built in 2018, with exceptional quality finishes and Mediterranean architecture. It has 550 sq.m usable, 750 sq.m built, ground footprint 176 sq.m and concrete structure.

This imposing building is located in an extremely quiet area where access is made on wide streets, asphalted and lighted. The plot has a surface of 355 sq.m, with a double opening on two streets - in a length of 40 ml. The yard has 180 sq.m. Together with those in the yard and those in the street, the number of parking places reaches 9 (nine!). In addition, the 4 terraces total of 230 sq.m. The view from the terrace above the 2nd floor offers a great panorama over the entire area.

The villa is sold with fully equipped and furnished kitchens.

The internal partition required extremely generous spaces, both for the day area and for the night-time floor. The areas are connected through an imposing inner staircase, with stainless steel "handrail" and marble-clad steps - a true visual and stylistic backbone of the whole architectural ensemble. The 4 bedrooms benefit from 4 bathrooms and access to balconies and/or terraces.



FOLLOW US ON SOCIAL MEDIA:

 facebook

CONTACT DETAILS:

Agency +40 726 11 99
88 / Valuation +40 733
33 09 87
office@espaco.ro

HEADQUARTERS ADDRESS:

2nd Anton Pavlovici Cehov Str., 5th Floor,
Tanora Building, District 1, 014192,
Bucharest, Romania, EU

The living area - dining - kitchen has an exit to one of the ground floor terraces. The area is bounded by the interior space through a sliding glass wall, which happily complements the concept of glazed spaces and gives the area a superb natural luminosity, a curtain wall that crosses the ground floor and the 1st floor of the villa and elegantly conceives the whole conception.

The construction is conceived in a modernist style, adapting the cubic shapes to the round ones, in the established spirit of contextual neo-modernism. The modernist formal elements combine with rectangular shapes and heavily contoured volumes, reinterpreted by the use of natural materials - wood, slate, travertine - that sweeten the urban pragmatism of the chosen style.

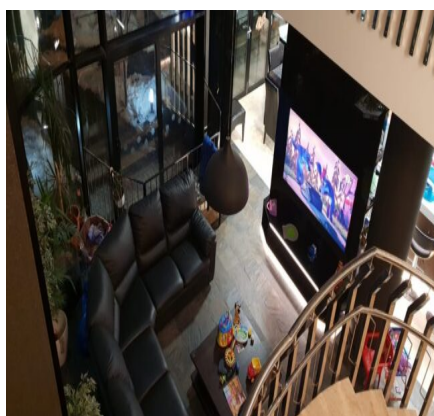
Construction materials and finishes place the building in the "luxury" category, and its position on the map of Bucharest gives it the attribute of the irresistibility of an extremely airy, quiet and easily interconnected area of hypermarkets, kindergartens, schools, lyceums, banks and to the "embarrassed boom of the city."

Price: 697.500 Euro - price without furniture

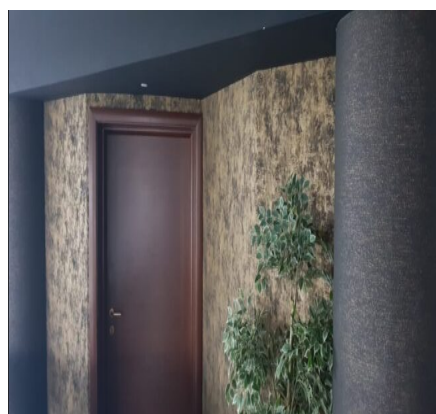
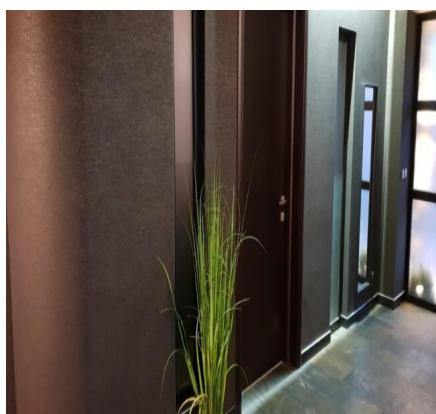
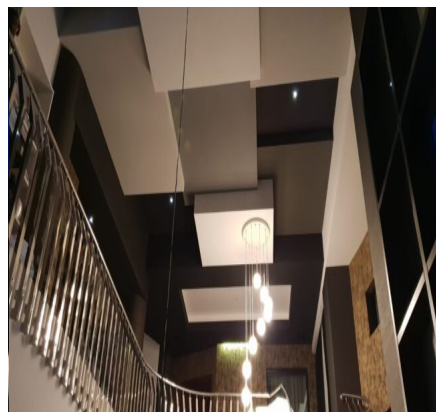
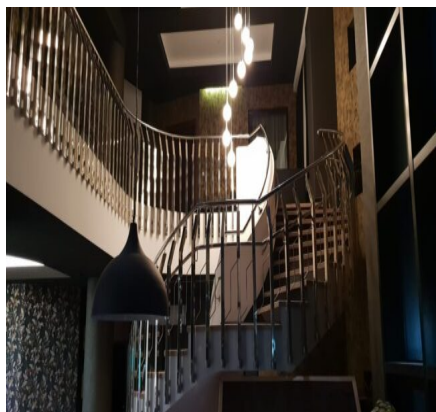
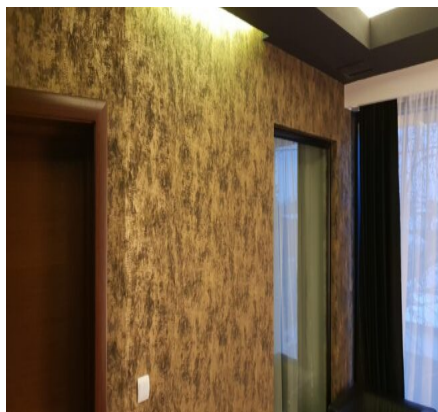
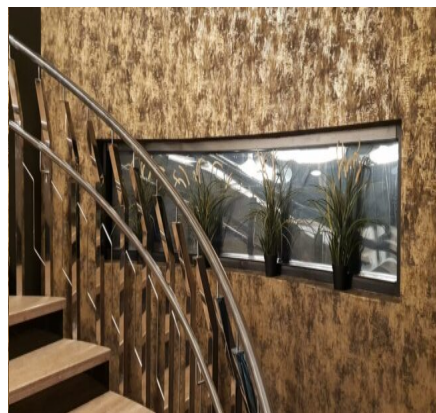
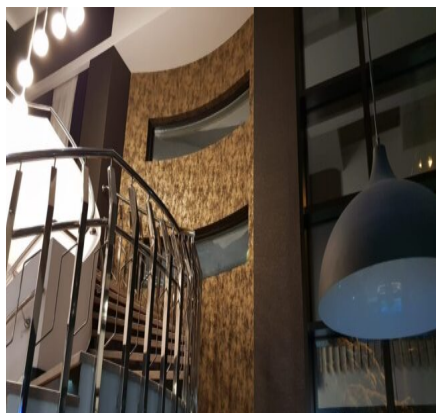
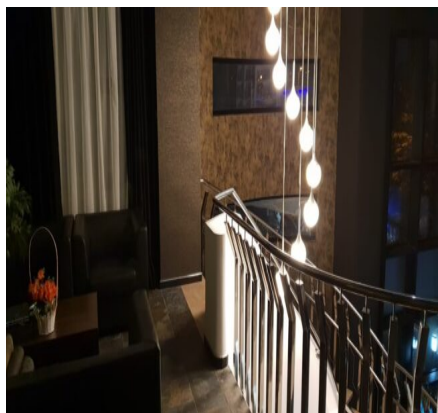
This offer belongs to Real Estate Company ESPACO Real Estate, Offer Code ESP05895RB

Phone: 0726.11.99.88/0752.289.033

Galerie



Exclusiv Villa, Carrefour Colentina area - ESP05895RB



FOLLOW US ON SOCIAL MEDIA:

f facebook

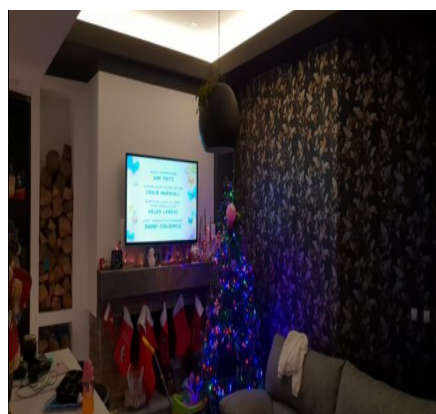
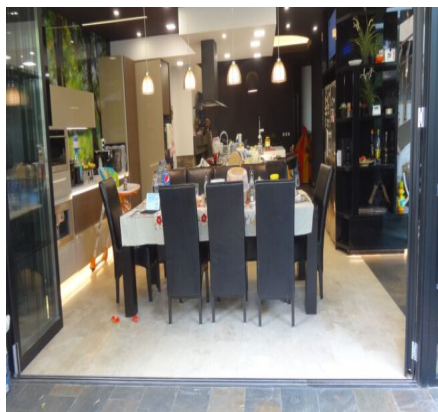
CONTACT DETAILS:

Agency +40 726 11 99
88 / Valuation +40 733
33 09 87
office@espaco.ro

HEADQUARTERS ADDRESS:

2nd Anton Pavlovici Cehov Str., 5th Floor,
Tanora Building, District 1, 014192,
Bucharest, Romania, EU

Exclusiv Villa, Carrefour Colentina area - ESP05895RB



FOLLOW US ON SOCIAL MEDIA:

facebook

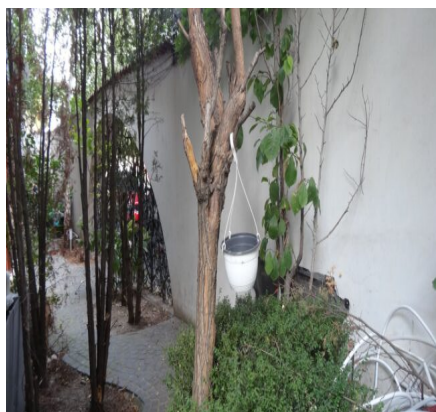
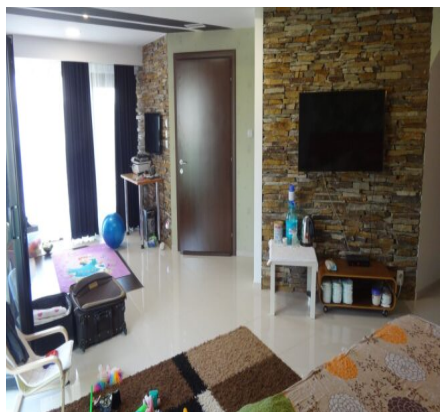
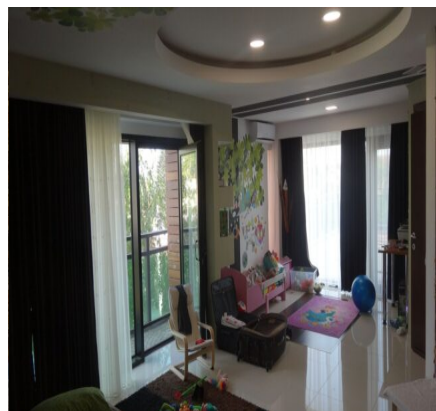
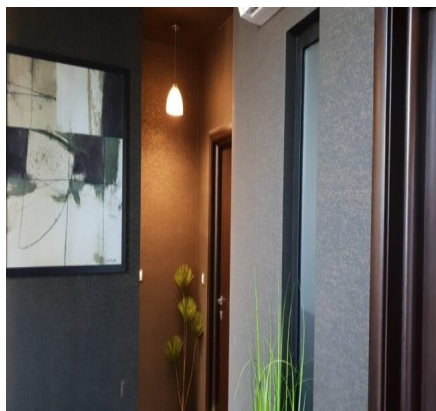
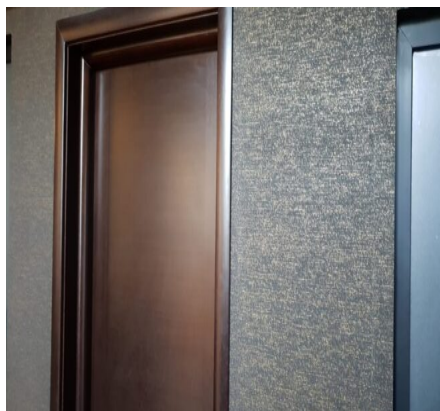
CONTACT DETAILS:

Agency +40 726 11 99
88 / Valuation +40 733
33 09 87
office@espaco.ro

HEADQUARTERS ADDRESS:

2nd Anton Pavlovici Cehov Str., 5th Floor,
Tanora Building, District 1, 014192,
Bucharest, Romania, EU

Exclusiv Villa, Carrefour Colentina area - ESP05895RB



FOLLOW US ON SOCIAL MEDIA:

f facebook

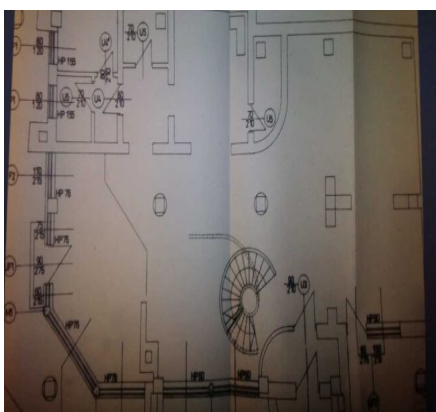
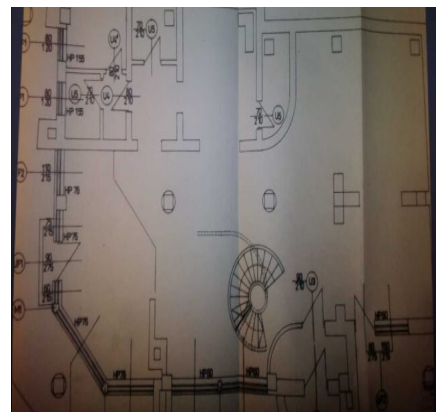
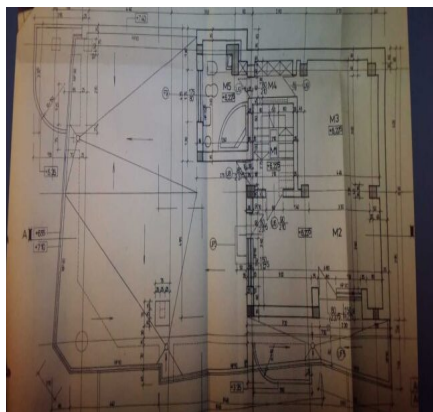
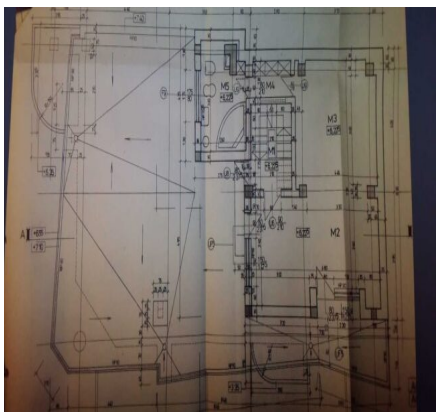
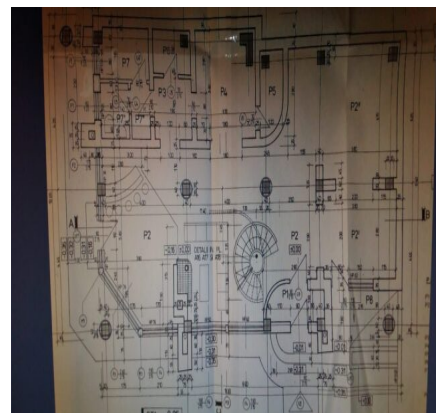
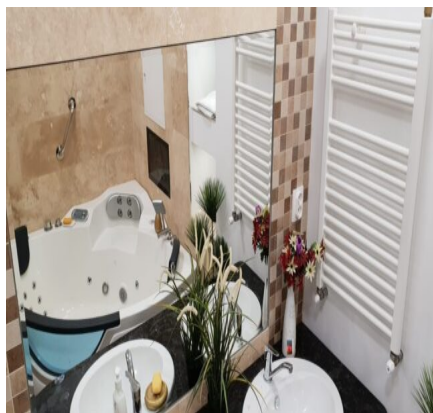
CONTACT DETAILS:

Agency +40 726 11 99
88 / Valuation +40 733
33 09 87
office@espaco.ro

HEADQUARTERS ADDRESS:

2nd Anton Pavlovici Cehov Str., 5th Floor,
Tanora Building, District 1, 014192,
Bucharest, Romania, EU

Exclusiv Villa, Carrefour Colentina area - ESP05895RB



FOLLOW US ON SOCIAL MEDIA:

f facebook

CONTACT DETAILS:

Agency +40 726 11 99
88 / Valuation +40 733
33 09 87
office@espaco.ro

HEADQUARTERS ADDRESS:

2nd Anton Pavlovici Cehov Str., 5th Floor,
Tanora Building, District 1, 014192,
Bucharest, Romania, EU