


 SURFACE
313 m²

 ROOMS NUMBER
8

 3.600 € / lună

Description

Spatiul este format din laborator de productie cofetarie si magazin de vanzare.

Laboratorul este complet utilat si dotat pentru activitatea de productie cofetarie/patiserie, respectand fluxul tehnologic.

Este amenajat de la zero de cca 6luni, totul fiind nou, incluzand vitrinele de expunere in zona de vanzare.

Intrega amenajare si dotare apartine actualului chirias care poate fie sa vanda toate utilajele si vitrinele, fie le poate inchiria.

Ulterior se preia contractul de inchiriere direct cu proprietarul spatiului.

La chirie se adauga un cost de mentenanta de 2.5euro/mp+TVA.



FOLLOW US ON SOCIAL MEDIA:

 facebook

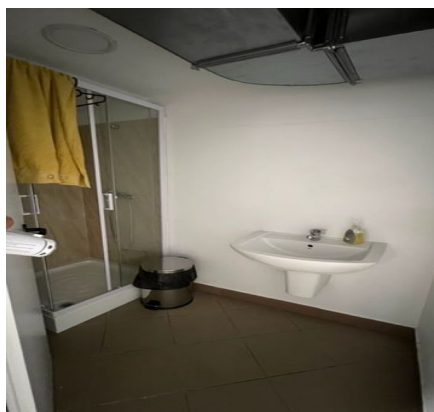
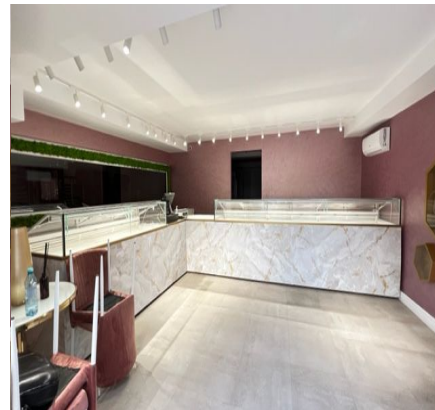
CONTACT DETAILS:

Agentie +40 726 11 99
88 / Evaluari +40 733 33
09 87
office@espaco.ro

HEADQUARTERS ADDRESS:

Str. Anton Pavlovici Cehov nr. 2, etajul 5,
Sector 1, Bucuresti, Romania
office@espaco.ro

Galerie



FOLLOW US ON SOCIAL MEDIA:

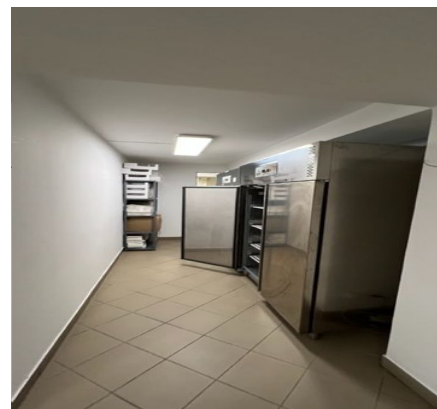
 facebook

CONTACT DETAILS:

Agentie +40 726 11 99
88 / Evaluari +40 733 33
09 87
office@espaco.ro

HEADQUARTERS ADDRESS:

Str. Anton Pavlovici Cehov nr. 2, etajul 5,
Sector 1, Bucuresti, Romania
office@espaco.ro



FOLLOW US ON SOCIAL MEDIA:

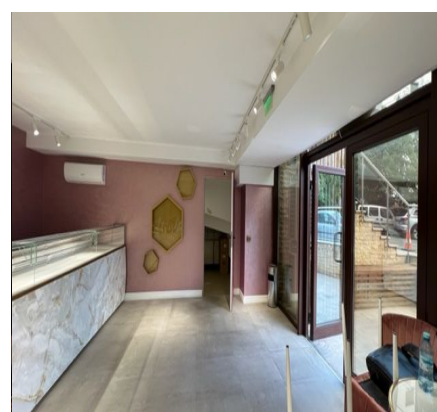
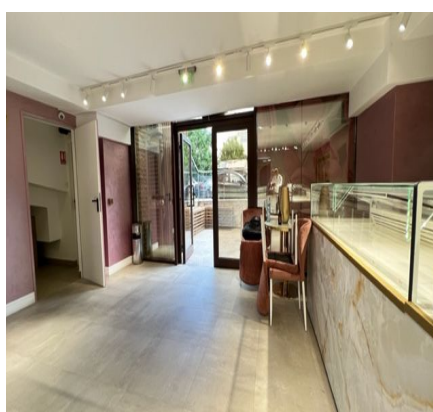
 facebook

CONTACT DETAILS:

Agentie +40 726 11 99
88 / Evaluari +40 733 33
09 87
office@espaco.ro

HEADQUARTERS ADDRESS:

Str. Anton Pavlovici Cehov nr. 2, etajul 5,
Sector 1, Bucuresti, Romania
office@espaco.ro



FOLLOW US ON SOCIAL MEDIA:

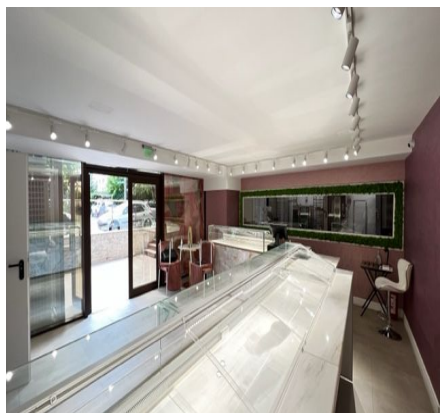
 facebook

CONTACT DETAILS:

Agentie +40 726 11 99
88 / Evaluari +40 733 33
09 87
office@espaco.ro

HEADQUARTERS ADDRESS:

Str. Anton Pavlovici Cehov nr. 2, etajul 5,
Sector 1, Bucuresti, Romania
office@espaco.ro



FOLLOW US ON SOCIAL MEDIA:

 facebook

CONTACT DETAILS:

Agentie +40 726 11 99
88 / Evaluari +40 733 33
09 87
office@espaco.ro

HEADQUARTERS ADDRESS:

Str. Anton Pavlovici Cehov nr. 2, etajul 5,
Sector 1, Bucuresti, Romania
office@espaco.ro